



Expression of interest

For

**Empanelment of agencies for Interior Fixtures and Installations for
Retail Shop and Completely Furnished Pre-Fabricated Cabins for
Retail Outlet for Haryana Agro Industries Corporation Limited**

HAIC-SFPF-009-2021

Contents

1. DISCLAIMER.....	3
2. Key Dates	5
3. Terms of Reference	6
4. Eligibility Criteria	8
5. Selection Criteria.....	10
6. General Rules and Directions for The Guidance of Selected Vendors.....	12
7. Annexure-A.....	21
8. Annexure-B.....	222
8. Financial Bid.....	29
9. Checklist	400

1. DISCLAIMER

- A. The information contained in this Terms of Reference document (the “TOR”) or subsequently provided to Bidder(s), whether verbally or in documentary or any other form by or on behalf of Haryana Agro Industries Corporation Limited. (HAICL), Government of Haryana, or any of their employees or advisors, is provided to Bidder(s) on the terms and conditions set out in this TOR and such other terms and conditions subject to which such information is provided.
- B. This TOR is not an agreement and is neither an offer nor invitation by HAICL to the prospective Bidders or any other person. The purpose of this TOR is to provide interested parties with information that may be useful to them in preparing their technical proposals and financial offers pursuant to this TOR (the Proposal”).
- C. This TOR is not an agreement and is neither an offer nor invitation by HAICL to the prospective Bidders or This TOR includes statements, which reflect various assumptions and assessments arrived at by the HAICL in relation to the Assignment. Such assumptions, assessments and statements do not purport to contain all the information that each Bidder may require. This TOR may not be appropriate for all persons, and it is not possible for the HAICL, its employees or advisors to consider the investment objectives, financial situation and particular needs of each party who reads or uses this TOR. The assumptions, assessments, statements and information contained in this TOR may not be complete, accurate, adequate or correct. Each Bidder should, therefore, conduct its own investigations and analysis and should check the accuracy, adequacy, correctness, reliability and completeness of the assumptions, assessments, statements and information contained in this TOR and obtain independent advice from appropriate sources. Information provided in this TOR to the Bidder(s) is on a wide range of matters, some of which depends upon interpretation of law. The information given is not an exhaustive account of statutory requirements and should not be regarded as a complete or authoritative statement of law. HAICL accepts no responsibility for the accuracy or otherwise for any interpretation or opinion on law expressed herein. HAICL, its employees and advisors make no representation or warranty and shall have no liability to any person, including any Bidder or Bidder under any law, statute, rules or regulations or tort, principles of restitution or unjust enrichment or otherwise for any loss, damages, cost or expense which may arise from or be incurred or suffered on account of anything contained in this TOR or otherwise, including the accuracy, adequacy, correctness, completeness or reliability of the TOR and any assessment, assumption, statement or information contained therein or deemed to form part of this TOR or arising in any way in this Bid Stage. HAICL also accepts no liability of any nature whether resulting from negligence or otherwise howsoever caused arising from reliance of any Bidder upon the statements contained in this TOR. HAICL may in its absolute discretion, but without being under any obligation to do so, update, amend or supplement the information,

assessment or assumptions contained in this TOR. The issue of this TOR does not imply that HAICL is bound to select a Bidder or to appoint the Selected Bidder, as the case may be for the Assignment and HAICL reserves the right to reject all or any of the Bidders or Proposals without assigning any reason whatsoever.

- D. The Bidder shall bear all its costs associated with or relating to the preparation and submission of its Proposal including but not limited to preparation, copying, postage, delivery fees, expenses associated with any demonstrations or presentations which may be required by HAICL or any other costs incurred in connection with or relating to its Proposal.
- E. HAICL shall not be liable in any manner whatsoever for the same or for any other costs or other expenses incurred by a Bidder in preparation or for submission of the Proposal, regardless of the conduct or outcome of the Bidding Process.

2. Key Dates

The bidders can submit their EOI documents in two bid sealed envelopes as per the dates mentioned below:

S. No.	Particulars	Details
1.	Document Reference Number	HAICL-SFPF-009-2021
2.	(i) Downloading of EOI Document/ Online bid Preparation (ii) DD of Rs.2,000/- (EOI document fee Rs.1,000/-, Processing Fee Rs.1,000/-) are required in the name of HAICL Retail (iii) DD for EMD of Rs.50,000/- (Rs. Fifty Thousand Only)	24.04.2021 to 04.05.2021 upto 5:00 pm
3.	Last date of submission of queries via email at haicpkl@gmail.com by 5:00 PM or by submitting in pre-bid meeting at 11:00 AM on 05.04.2021 in Main Conference Room, HAICL, Sector-4, Panchkula	30.04.2021
4.	Submission of technical and Financial Bid in sealed envelopes	24.04.2021 to 04.05.2021 upto 5:00 pm
5.	Date of opening of sealed envelopes bids	05.05.2021 at 3:00 pm
6.	Manual submission of only additional document, if required.	06.05.2021 at 5:00 pm
7.	HAICL contact details	Haryana Agro Industries Corporation Limited, Bays No. 15-20, Sector 4, Panchkula, Haryana 134112 Email- haicpkl@gmail.com Tel- 0172-2561305
Note: - In case a Central/ State Holiday are declared on any day, the event will be held on the next working day at the same time and same venue.		

3. Terms of Reference

Introduction

This document is a Expression of interest in order to select **vendors for the supply, fabrication and installation of Pre-fabricated shops & supply, fabrication and installation of racks, cash counter, chair, ladder, shopping basket, and shutter** for Retail Expansion Project of Haryana Agro Industries Corporation Limited ('HAICL').

HAICL under the Retail Expansion Project aims to setup 2,000 FMCG retail stores/outlets (1,500 outlets for Rural locations and 500 for Urban Locations) across the 22 districts of Haryana, which will help in boosting the spirit of entrepreneurship and generating favourable employment opportunities. Through these retail outlets, Government will offer best quality products at discounted prices under State-owned brands and further the aim of Haryana Retail policy.

The Retail Expansion Project further aims to facilitate the achievement of vision 'Atmanirbhar Bharat and Atmanirbhar Haryana' by making people self-reliant by providing them level playing field and making them reap the fruits of a growing Food & Grocery market. The focal point of this scheme is to make the people of the state of Haryana self-reliant and progressive.

The broad objectives of the same are listed below:

- To provide an alternate channel of sales to MSMEs, FPOs, SHGs and Govt. Agencies and bring different stakeholders on a common platform by leveraging the strengths of each other
- To promote entrepreneurship
- Provide best quality products at discounted prices
- Enhance the reach of Haryana based MSME's,
- Promote retail policy of Haryana and generate employment across the State
- Going forward, the organization would help generate market for innovative products across packaged consumer goods
- Enhancing manufacturing efficiency in the State

Scope of Work

The scope of work to be undertaken by the Fit-out and Installation vendors is listed below:

- HAICL is looking for vendors in the following two categories
 - **Category 1:** Vendors that will supply and install in-store fixtures such as racks, cash counter, chair, ladder, sign board, shutter etc.
 - **Category 2:** Vendors that will fabricate and install Pre-fabricated Cabins/ shops with interior fitments including racks, cash counter, chair, ladder, shutter etc. as per specifications laid in this document
- For Category 1, the vendor needs to take measurement of the store and finish installation of required fixtures and ensure store readiness within two weeks of the site confirmation provided by Marketing/ Franchisee Manager of HAICL. HAICL will not be liable for the costs incurred in site visit and transportation or installation charges.

The vendor will have to bear all associated costs that incur in making the store ready. HAICL or its franchisee will pay only for the fixtures installed by the vendor as per the finalized rates with HAICL.

- For Category 2, the vendor needs to conduct site inspection, measurements (if required) and installation of Pre-fabricated shops along with required fixtures and ensure store readiness within four weeks of the site confirmation provided by Marketing/ Franchisee Manager of HAICL. HAICL will not be liable for the costs incurred in site visit and transportation or installation charges. The vendor will have to bear all associated costs that incur in making the store ready. HAICL or its franchisee will pay for the Pre-fabricated shop & its fixtures installed by the vendor as per the finalized rates with HAICL.
- For Both, Category 1 and 2, the vendor needs to conduct a site assessment and basis the same needs to provide a cost estimate to the Franchisee. A copy of the estimate also needs to be sent to HAICL with measurements and dimensions of the site. In case the vendor feels that the site cannot be completed in the stipulated timeline provided in the TOR, it needs to communicate the same to HAICL with reasons for the same. Acceptance of the extension on timelines is the sole discretion of MD HAICL
- Every selected vendor/ bidder will need to apply/ bid for minimum 200 outlets in any or both categories. However, the same is extendable to 500 outlets based on the performance and capability of the selected vendor. Extending the number of outlets will be the sole discretion of MD HAICL.
- Pre-fabricated shops are optional and will only be required in case the selected franchisee desires for one. However, fixture installation is mandatory for all outlets.
- Broad Sizes of the outlets are 200 sq. ft., 300-700 sq. ft. and > 800 Sq. ft.. These sizes are illustrative, and the vendor will need to take measurement of each outlet before commencement of work at each site and communicate the same to HAICL.
- The bidder can opt for both categories or for any one category
- The Item rates are invited by HAICL for its tentative Franchisees, who will procure the material from the selected vendors for fabrication works so as to have uniformity in design, size, specifications throughout the state.
- The tentative Franchisees will make request to HAICL which will further authorize the selected vendors for fabrication but payment as per the rates finalized will be made directly by the Franchisees in advance. The advance payment will be in the form of demand draft in the name of executing vendor. The demand draft has to be submitted to HAICL and HAICL will release the DD to authorized vendor within 15 days of completion of work.
- The present selection of vendors is only to facilitate Franchisees all over the state under HAICL.
- The rates quoted in the EOI are applicable till the completion of the contract and no variation by way of any extra will be allowed under any circumstances. The rates given in the schedule of rates are inclusive of Octroi, terminal tax, Royalty and all other taxes and charges. However, if there is increase or decrease by 5% or more in major raw material cost i.e. CRCA/ iron related material etc, HAICL will negotiate and enhance/reduce the quoted price. The authorized vendor will apprise HAICL via email about market trend of major material, at least every 15th day or on same day when there is increase or decrease by 5% or more.

- No claim in respect of GST or any other local taxes which might be in existence or which might hereafter be imposed will be admissible.
- The bidders are subject to be disqualified if they have:
 - Made misleading or false representations in the forms, statements and attachments submitted in proof of the qualification requirements; and/or.
 - Record of poor performance such as abandoning the works, not properly completing the contract, inordinate delays in completion, litigation history, or financial failures etc.; and/or
 - Participated in the previous bidding for the same work and had quoted unreasonably high bid prices and could not furnish rational justification to **Haryana Agro Industries Corporation Limited (HAICL)**.

4. Eligibility Criteria

The bidders will be assessed as per the pre-qualification criteria defined in the TOR. Only the bidders who qualify pre-qualification shall be eligible for **financial evaluation**. Non-conforming Proposals will be rejected and will not be eligible for any further processing. The pre-qualification criterion for the organization is as below:

S. No.	Requirement	Required Documents
1	The bidder (a Business Entity) shall mean a company registered in India under the Companies Act, 1956 or 2013 or a partnership firm registered under the Limited Liability Partnership Act of 2008 and operating for at least last 3 (Three) years as on March 31, 2021.	Incorporation/ Registration Certificate
2	<p>Category 1 only i.e. minimum 200 outlet's interior</p> <p>The entity should have at-least average of Rs. 0.5 Cr. Annual Turnover for providing similar nature of work in last three Financial Years</p> <p>Category 2 only i.e. minimum 200 Pre-fabricated shops as per the demand from Franchisee</p> <p>The entity should have at-least average of Rs. 1 Cr. Annual Turnover for providing similar nature of work in last three Financial Years</p> <p>Category 1 and 2 both i.e. minimum 200 outlets</p> <p>The entity should have at-least average of Rs. 1.5 Cr. Annual Turnover for providing similar nature of work in last three Financial Years</p>	Certificate from the statutory auditor/ Client's certificate and agreement/ work order
3.	<p>One similar nature of completed Work costing not less than Rs. 1.0 Cr. in last 3 years</p> <p>OR</p> <p>Two similar nature of completed Work costing not less than Rs. 0.5 Cr. each in last 3 years</p> <p>OR</p> <p>Three similar nature of completed work costing not less than Rs. 0.35 Cr. each in last 3 years</p>	Client's certificate and agreement/work order
4	The bidder should have successfully completed one project with State or Central Government or reputed organisation to deliver similar project of store fitment	Client's certificate and agreement/work order

5	The bidder should not currently have been blacklisted/banned/debarred by any State/ Central Government or any of its Agency/ PSU or under a declaration of ineligibility for fraudulent or corrupt practices or inefficient/ ineffective performance.	Undertaking by the bidder Falsification and nondisclosure will lead to disqualification from the evaluation process
---	---	---

Along with the above the bidders need to provide copy of the following documents:

- GST
- Pan Card
- Firm's Factory Address with documentary proof

5. Selection Criteria

- (i) Financial bid will be opened of only eligible bidders. Financial bid will be inclusive of taxes, transportation cost, installation cost or any other such costs.
- (ii) In order to select all eligible bidders, HAICL will follow following process:
 - a) HAICL will negotiate with L1 bidder
 - b) The negotiated price will be offered to all other bidders as counteroffer
 - c) All bidders in agreement with negotiated counteroffer will be allotted equal number of stores. However, total allocation will be 80% of net requirement that is 2,000 outlets in Category 1. All bidders not in agreement to counteroffer but within 5% of counteroffer of L1 vendor will be allotted equal number of stores. However total allocation will be 20%.
- (iii) The selected vendor/s will deposit 5% as security deposit within at least 7 days before the execution of allotted work at executed site/s. The security deposit will be refunded after Defect Liability Period and HAICL and vendor will not claim any interest on deposited amount.
- (iv) HAICL will allot the work zone wise. Haryana will be divided in to 4-5 zones. Selected vendors at counteroffer will be given zones nearest to Delhi NCR/ to their manufacturing plant/ vendors choice of zone. Other selected vendors will be allotted zone as per discretion of MD HAICL.
- (v) The acceptance of the EOI will rest with the Managing Director, **Haryana Agro Industries Corporation Limited (HAICL)**, Panchkula who does not bind himself to accept the lowest EOI and reserves to himself the authority to reject any or all the EOIs received without assigning any reason.

6. General Rules and Directions for The Guidance of Selected Vendors

- 1) All work proposed for execution by contract will be notified to the vendor via e-mail or website if **Haryana Agro Industries Corporation Limited (HAICL)** by the Marketing/ Franchisee Manager post approval from MD HAICL

This will state the work to be carried out, as well as the date for completion of work, also the location of the work to be carried out.

For Category 1 (Interior Fixtures), the vendor needs to take measurement of the store and finish installation of required fixtures and ensure store readiness within two weeks of the site confirmation provided by Marketing/ Franchisee Manager of HAICL. HAICL will not be liable for the costs incurred in site visit and transportation or installation charges. The vendor will have to bear all associated costs that incur in making the store ready. Franchisee will deposit Demand draft in the name of vendor to HAICL before the start of work and HAICL will hand-over the Demand Draft to vendor after satisfaction report along with invoice receive from franchisee. Vendor will invoice the franchisee directly only the amount will be released from HAICL to vendors.

For Category 2 (Pre-fabricated Shops with Interior Fixtures), the vendor needs to conduct site inspection, measurements (if required) and installation of Pre-fabricated Shops along with required fixtures and ensure store readiness within four weeks of the site confirmation provided by Marketing/ Franchisee Manager of HAICL. HAICL will not be liable for the costs incurred in site visit and transportation or installation charges. The vendor will have to bear all associated costs that incur in making the store ready. Franchisee will pay via HAICL only for the fixtures installed by the vendor as per the finalized rates with HAICL. Franchisee will deposit Demand draft in the name of vendor to HAICL before the start of work and HAICL will hand-over the Demand Draft to vendor after satisfaction report along with invoice receive from franchisee. Vendor will invoice the franchisee directly only the amount will be released from HAICL to vendors.

- 2) The department may refuse or suspend payments on account of a work when executed by a firm or by selected vendors described, unless a satisfactory work completion report from Franchisee.
- 3) The receipt of an accountant or clerk for any work executed by the selected vendors will not be considered as an acknowledgement of work done till its signed by Franchisee. It is the sole responsibility of the selected vendors to procure a certificate of work completion.
- 4) The details of intimation, assessment, allotment, payment and completion of installation of fixtures in franchisee stores for category 1 vendors are as under:

Vendor Type	Particulars	Remarks	Days
Category 1	HAICL Franchisee Manager	HAICL franchisee manager will convey the vendors about the selected franchisee details for the development of franchisee store in terms of fixtures	T
	Vendors	Site visit by Vendors as informed by Franchisee.	T+3
	Vendors	Submit the Performa of estimated cost in T+5 days to HAICL.	T+5
	Franchisee Partner	Franchisee needs to submit the demand draft of proposed amount in advance for the development of store to HAICL. Also, franchisee needs to submit the completion certificate of fixtures in store within 3 days to the vendors.	T+7

	Vendors	After allotment of work, the vendors have to complete the fixture installation within 2 weeks. Vendors has to submit the completion certificate to HAICL for release of Demand Draft.	T+7+14
--	---------	---	--------

If delay is avoidable, penalty of Rs 1,000 per day will be paid by vendor to HAICL and then Demand Draft of franchisee will be released to vendor. The penalty will remain with HAICL and franchisee cannot claim it from HAICL. In case delay is unavoidable, vendor needs to submit a report with consent of franchisee and seek extension from MD HAICL. MD HAICL will be a final authority to impose or remove any penalty to the vendors.

- 5) The details of intimation, assessment, allotment, payment and completion of installation of fixtures in franchisee stores for category 2 vendor are as under:

Vendor Type	Particulars	Remarks	Days
Category 2	HAICL Franchisee Manager	HAICL franchisee manager will convey the vendors about the selected franchisee details for the development of franchisee store in terms of fixtures	T
	Vendors	Site visit by Vendors as informed by Franchisee.	T+3
	Vendors	Submit the Performa of estimated cost in T+5 days to HAICL.	T+5

	Franchisee Partner	Franchisee needs to submit the demand draft of proposed amount in advance for the development of store to HAICL. Also, franchisee needs to submit the completion certificate of fixtures in store within 3 days to the vendors.	T+7
	Vendors	After allotment of work, the vendors have to complete the fixture installation & placement of pre-fabricated store within 30 days. Vendors has to submit the completion certificate to HAICL for release of Demand Draft.	T+7+30

If delay is avoidable, penalty of Rs 5,000 per day will be paid by vendor to HAICL and then Demand Draft of franchisee will be released to vendor. The penalty will remain with HAICL and franchisee cannot claim it from HAICL. In case delay is unavoidable, vendor needs to submit a report with consent of franchisee and seek extension from MD HAICL. MD HAICL will be a final authority to impose or remove any penalty to the vendors.

- 6) If the Selected Vendors shall desire an extension of the time for completion of the work on the grounds of unavoidable circumstances, he shall apply in writing to the MD HAICL within 7 days of the date of the hindrance, If the circumstances are found reasonable, MD HAICL may authorize such extension of time.
- 7) All invoices will be raised in the name of franchisee. A copy of invoice will be submitted along with completion/satisfaction certificate of franchisee. HAICL will hand over the

demand draft to vendor. Vendor is advised not to start work before advance Demand Draft is not received by HAICL from franchisee. Advance Demand Draft will be of value as per the estimate provided by vendor and agreed by the franchisee. The rates quoted by vendor on the Proforma Invoice need to be as per DNIT and as per required work mutually agreed by vendor and franchisee. Thus, vendor will do site visit, prepare an estimate as per site and quoted rates and then will take consent and from franchisee and submit all these documents to HAICL. Thereafter, HAICL will seek demand draft from franchisee and after receiving of demand draft, HAICL will convey to vendor to initiate the work. In any case of non-compliance by franchisee, vendor will convey to HAICL and concerned officer of HAICL will assist the vendor to ensure compliance.

- 8) The selected Vendors shall execute the whole and every part of the work in the most substantial and work man like manner, and both as regards material and otherwise in every respect in strict accordance with the specifications. The selected vendors shall also confirm exactly, fully and faithfully to the designs, drawing and instructions in writing relating to the work signed by the officer designated by MD HAICL and lodged in the office, and to which the selected vendors shall be entitled to have access such office, or on the site of the work for the purpose of inspection during office hours, and the selected vendors shall, if he so requires, be entitled at his own expense to make or cause to be made copies of the specification, and of all such designs, drawings and instructions as aforesaid.
- 9) Based on the feedback submitted by designated officer the MD HAICL shall have full powers at all times to subject to the employment of any workman, foreman or other employee on the works by the Selected Vendors, and if the Selected Vendors shall receive notice in writing from MD HAICL requesting removal of any such man from the work, the Selected Vendors shall comply with the request forthwith.

No such workman, foreman or other employee after his removal from the works by request of the MD HAICL shall be re-employed or re-instated on the works by the Selected Vendors at any time, except with the previous approval in writing of the MD HAICL. The Selected Vendors shall not be entitled to demand the reason from the MD HAICL for requiring the removal of any such workman, foreman or other employee.

- 10) MD HAICL shall have power to make any alteration in or omission from additions, to or substitutions for, the original specifications, drawings, designs and instructions that may appear to him to be necessary or advisable during the progress of work and the Selected Vendors shall be bound to carry out the work in accordance with any instructions which may be given to him in writing signed by the MD HAICL. The time for the completion of the work shall be extended in the proportion that the altered, additional or substituted work bears to the original contract work. If alteration is not included in quoted rates, HAICL will seek quote in sealed enveloped from each selected vendor. Sealed envelopes will be opened in front of selected vendors. HAICL will fix common rates in coordination with vendors. The vendors will execute new alterations at rates fixed by HAICL.
- 11) HAICL will not be eligible to pay or compensate the claim amount to the vendors for the work not carried out due to alteration made in original specifications, drawings, designs and instruction made by HAICL.
- 12) If it shall appear to the HAICL observation that the executed work by the selected vendors is imperfect, un-skilful workmanship or used of low material quality or not in accordance with the contract then the vendor is required to rectify or remove or reconstruct the work in given time as per HAICL standard and the selected vendors will be liable to pay compensation at the rate of one percent on the amount of work order. If the HAICL observe the inferiority work by vendors 2-3 times then the HAICL is eligible to terminate the contract of vendors and eligible to forfeit the security deposit of the vendors.
- 13) All work under or in course of execution or executed in pursuance of the contract shall be open for the inspection by the HAICL officers designated by MD HAICL. The vendors will be intimated for the inspection visit in advance by the HAICL representative. The responsible team member of the selected vendors should be present there to receive instructions for any changes or updates, if required.
- 14) The selected vendors are bound to work as per EOI scope. HAICL will only be eligible to pay the selected vendors as per submitted measurement of stores. If there would be any changes in measurement arises during execution, then the vendors need to take a consent from HAICL within 5 days. If the selected vendors executed the work

without consent of HAICL, then thereof no payment or allowances shall be made for such work or the materials.

15) The selected vendors should abide rules set by HAICL & state government of Haryana.

The illustrative examples are as under:

- a. No labourer is employed that is not confirming to the guidelines as per the State or Central Government e.g. child labour, minimum wages etc.
- b. The vendors are not allowed to deploy the un-skilful employee at franchisee sites. HACIL will be eligible to eliminate the un-skilful employee on immediate basis and the vendors are bound to replace the employee within 24 hrs. In case, if the vendors fail to comply, HAICL will impose the penalty of Rs. 50,000 to the vendors.
- c. If HAICL observe the use of low material quality or not in accordance with the contract, then the vendor needs to replace the quality of material within 20% of allotted time. Category 1 & 2 vendors have to replace the material within 15 days & 30 days. In case, if the vendors fail to comply with the standards set by HAICL then the vendors will be eligible to pay penalty of Rs. 1000/day (category 1) and Rs. 5000/day (category 2) to HAICL.

16) In every case in which by virtue of the provision of Section 12, sub-section (1) of the Workmen's Compensation Act, 1923, **Haryana Agro Industries Corporation Limited (HAICL)** is obliged to pay compensation to workmen employed by the Selected Vendors, in execution of works, **Haryana Agro Industries Corporation Limited (HAICL)** will recover from the Selected Vendors the amount of the compensation so paid, and without prejudice to the rights of **Haryana Agro Industries Corporation Limited (HAICL)** under Section-12, subsection (2) of the Act, **Haryana Agro Industries Corporation Limited (HAICL)** shall be at liberty to recover such amount or any part thereof by deducting in from the contract or otherwise.

Haryana Agro Industries Corporation Limited (HAICL) shall not be bound to contest any claim made against it under Section 12, sub-section (1) of the said Act except on the written request of the Selected Vendors and his upon giving to **Haryana Agro Industries Corporation Limited (HAICL)** full security for all costs for which **Haryana Agro Industries Corporation Limited (HAICL)** might become liable in consequence of contesting claim

- 17) Any excess payment made to the selected vendors inadvertently or other under this contract or any other sum found to be due to HAICL by the selected vendors in respect of this contract, may be deducted from any sum whatsoever payable by HAICL to the vendors. In case deduction is not possible, vendor will deposit the dues in 7 working days otherwise an interest of 18% per annum will be charged.
- 18) All work to be executed under the contract shall be executed under the directions and subject, to the approval in all respects of the Managing Director of the **Haryana Agro Industries Corporation Limited (HAICL)** for the time being who shall be entitled to direct at what point or points and in what manner they are to be commenced, and from time to time carried on.
- 19) In case of any dispute arising out of the contract, the matter shall be referred to the Managing Director, **Haryana Agro Industries Corporation Limited (HAICL)**, Panchkula as arbitrator.
- 20) **Defect Liability Period:** All wear and tear and required maintenance of fitment will be considered to be scope of work under defect liability period. Defect liability period of different category of products from date of completion of work is as stated below:
- a. Pre-fabricated shop (Body): 5 years
 - b. Storage Racks: 5 years
 - c. Electrical Fittings (Wires & Conduits etc.): 5 years
 - d. Electrical fixtures (Lamps, Switch boards & Switches etc.)- 3 years
 - e. Wooden Furniture & Fixtures: 3 years

The date of completion shall be considered as date certified by the officer designated by MD HAICL. The officer designated by MD HAICL shall give notice to the Selected Vendors of any defects before the end of the defect's liability period. The Selected Vendors shall correct the notified defect/defects within the length of time specified by the officer designated by MD HAICL. Any damage by franchisee will not be covered in defect liability period. Such damages will be reinstated by franchisee at its own cost. The vendor will charge for rectification of damages as per quoted rates.

- 21) **Taxes:** The rates quoted by the Selected Vendors shall be deemed to be inclusive of the sales tax/ VAT, Labour Cess, Service Tax/GST as applicable and other taxes that the Selected Vendors will have to pay for the performance of this Contract.

22) **Transportation**- The rates quoted will be inclusive of transportation cost.

Annexure-A

AFFIDAVIT

1. I, the undersigned, do hereby certify that all the statements made in the required attachments are true and correct.
2. The undersigned also hereby certifies that neither our firm M/s_____ have abandoned any work Govt. of India/or any State or Govt. undertakings nor any contract awarded to us for such works have been **rescinded/terminated** on account of our default, during last five years prior to the date of this bid.

OR

The following works have been abandoned/rescinded on account of our default during the last five years prior to the date of this bid.

- a.
- b.
- c.
3. The undersigned hereby authorize(s) and request(s) any bank, person, firm or corporation to furnish pertinent information deemed necessary and requested by the Department to verify this statement or regarding my (our) competence and general reputation.
4. The undersigned understand and agrees that further qualifying information may be requested, and agrees to furnish any such information at the request of the Department/ Project implementing agency.

(Signed by an Authorized Officer of the Firm)

(Title of Officer)

(Name of Firm)

DATE

Annexure-B

Work performed as Vendors (works of a similar nature over the last three years)

Project Name	Name of the Employer	Description of work	Contract No.	Value of Contract (Rs. crore)	Date of issue of work order	Stipulated period of completion	Actual date of completion	Remarks explaining reasons for delay & work Completed

7. Technical Specification

(i) Technical Specifications for supply, fabrication and installation of Pre-fabricated Retail outlets

Size/dimension of outlet:

Store Size: - W-12'0" X D-16'6" X H-10'0"

Platform: - W-12'0" X D-2' X H - 6"

S. No	Elements	Description / Specification
1	Wall	Supply Fabrication and installation of External walls Structure: MS frame structure with 80X80 tube sections for columns and supporting legs min 6 no's and internal walls with 40x40mm finished with 0.8 mm MS profile sheet (Make: Tata Bluescope / JSW Steel Ltd. / Bhushan Power and Steel Ltd. or equivalent) with paint finish from outside
2	Door	Supply Fabrication and installation of Full width front open Foldable Door with required hardware and lock made with 0.8 mm MS Profile Sheet (Make: Tata Bluescope / JSW Steel Ltd. / Bhushan Power and Steel Ltd. or equivalent) on MS frame structure
3	Roof	Supply Fabrication and installation of ceiling: MS frame structure in 80x40mm and 40x40 mm tube section covered with 0.8mm MS profile sheet (Make: Tata Bluescope / JSW Steel Ltd. / Bhushan Power and Steel Ltd. or equivalent) with approved paint from the inner side. Installation of glass wool based insulation on the roof with 6mm prelam board as false ceiling
4	Flooring	Supply Fabrication and installation of flooring: 18 mm Bison board flooring on MS frame bed with 60x40 mm tubular section finished with 1.5mm PVC flooring with approved colour/pattern
		Supply Fabrication and installation of external plinth: 18 mm Bison board flooring on MS frame bed with 60x40 mm tubular section finished with 1mm MS chequered sheet / vitrified tile (make Kajaria, NITCO, Somany)
5	Electricals	Supply Fabrication and installation of required electrical work: All internal wiring with PVC conduit with 2 switch & socket @16 amp and 3 switch & socket @ 6 Amp with MCB as required Lighting - Hanging LED dome light, 20 watts (make Bajaj, Philips, Surya or equivalent) - 6 no's Connector: - Using MCB & connector for main cable (make Polycab, Havells, Finolex or equivalent) as required
6	Façade	Supply Fabrication and installation of ACP external Signage with LED Tube Lights and laser cut Acrylic Letters.
		Supply Fabrication and installation of external Canopy in MS structure and Profile sheet with 3 no. LED downlighter-8 watt
7	Civil	Supply, Fabrication and installation of PCC Block with 8mm base plate to support the super structure - 6 nos. as required per site condition

8	SKUs Display Rack	1.1 Supply and Fabrication of Self standing Display rack size W 3'-0" x H 7'-0" with taper on both sides with structure in MS tube section 25x25 mm @1.2 mm thickness and wooden shelf in 18 mm prelam board- 6 nos @ 450 mm depth -1 no., 300 mm depth – 5 no.
		1.2 Supply and Fabrication of Self standing Display rack size W 3'-0" x H 8'-0" with taper on both sides with structure in MS tube section 25x25 mm @1.2 mm thickness and wooden shelf in 18 mm prelam board- 7 nos @ 450 mm depth -2 no., 300 mm depth – 6 no.
		1.3 Supply and Fabrication of Self standing Display rack size W 3'-0" x H 7'-0" with taper on both sides with structure in MS tube section 25x25 mm @1.2 mm thickness and wooden shelf in 18 mm prelam board- 6 nos @ 450 mm depth -1 no., 300 mm depth – 5 no.
		1.4 Supply and Fabrication of Self standing Display rack size W 3'-0" x H 8'-0" with taper on both sides with structure in MS tube section 25x25 mm @1.2 mm thickness and wooden shelf in 18 mm prelam board- 7 nos @ 450 mm depth -2 no., 300 mm depth – 5 no.
		1.5 Supply and Fabrication of Modular Display Racks size W 2'-0" x H 7'-0" and with structure in with shelves of 20 Gauge MS (0.9 mm thickness), Channel of 14 Gauge, Bracket 12 Gauge, Backsheet 22 Gauge @ 15 inch depth -3 no., 12 inch depth – 3 no.
		1.6 Supply and Fabrication of Modular Display Racks size W 2'-0" x H 8'-0" and with structure in with shelves of 20 Gauge MS (0.9 mm thickness), Channel of 14 Gauge, Bracket 12 Gauge, Backsheet 22 Gauge @ 15 inch depth -3 no.,12 inch depth – 4 no.
		1.7 Supply and Fabrication of Modular Display Racks size W 3'-0" x H 7'-0" and with structure in with shelves of 20 Gauge MS (0.9 mm thickness), Channel of 14 Gauge, Bracket 12 Gauge, Backsheet 22 Gauge @ 15 inch depth -3 no.,12 inch depth – 3 no.
		1.8 Supply and Fabrication of Modular Display Racks size W 3'-0" x H 8'-0" and with structure in with shelves of 20 Gauge MS (0.9 mm thickness), Channel of 14 Gauge, Bracket 12 Gauge, Backsheet 22 Gauge @ 15 inch depth -3 no.,12 inch depth – 4 no.
		1.9 Supply and Fabrication of Modular Display Racks size W 4'-0" x H 7'-0" and with structure in with shelves of 20 Gauge MS (0.9 mm thickness), Channel of 14 Gauge, Bracket 12 Gauge, Backsheet 22 Gauge @ 15 inch depth -3 no.,12 inch depth – 3 no.
		1.10 Supply and Fabrication of Modular Display Racks size W 4'-0" x H 8'-0" and with structure in with shelves of 20 Gauge MS (0.9 mm thickness), Channel of 14 Gauge, Bracket 12 Gauge, Backsheet 22 Gauge @ 15 inch depth -3 no.,12 inch depth – 4 no.
9	Display Rack-Gondola	2.1 Supply and Fabrication of Self standing Display rack size W 4'-0" x H 5'-0" X D 2'-0" with taper on both sides (top depth- 1'6", Bottom Depth-2'0") with structure in MS tube section 25x25 mm @1.2 mm thickness and wooden shelf in 18 mm prelam board- 6 nos @ top shelf depth - 450 mm & bottom shelf depth - 550 mm (Self standing Display rack to be grouted in floor)
		2.2 Supply and Fabrication of Modular Display Racks size W 3'-0" x H 5'-0" X D 1'-5" with taper on both sides of 0.9 mm and with structure in with shelves of 20 Gauge MS, Channel of 14 Gauge, Bracket 12 Gauge, Backsheet 22 Gauge, 15 inch depth for each shelves
10	Counter Desk	Desk specification with W 1'-8 X H 3'-0" X L 3'-4" structure in MS, 2-3 number of drawers with 1-inch prelam wooden top
11	Chair	Standard MS chair with Cushion

12	Ladder	Aluminum Ladder 4 feet
13	Shopping Basket	Multiuse shopping plastic basket for super mart of standard size
14	Rolling Shutter	MS rolling shutter in 0.8mm sheet with all hardware, fitting & lock
15	Shelf Rack	Shelve Rack with size of 12 inch
		Shelve Rack with size of 15 inch
		Shelve Rack with size of 18 inch
16	Signage-Opt. 1	ACP signage size – 3mm laser cut Lit acrylic letters, 1.5 inch width as per approved design, 3mm ACP sheet, 9 mm solid white acrylic tray, with MS frame structure. Lighting with Led modules asper required quantity
	Signage-Opt. 2	ACP signage size – 3mm laser cut Non-Lit acrylic letters as per approved design, 3mm ACP sheet, with MS frame structure. Lighting with Led modules asper required quantity
	Signage-Opt. 3	Lit Flex signage size - Flex Printing and installation on MS Frame structure. Specs: 1 "or 3/4" square pipe frame double structure, Precoated 22 swg GI sheet on sides and 26 swg GI sheet at back Single site printing @Alluminium L Channel Edge lit
	Signage-Opt. 4	Lit Flex signage size - Flex Printing and installation on MS Frame structure. Specs: 1 "or 3/4" square pipe frame double structure, Precoated 22 swg GI sheet on sides and 26 swg GI sheet at back Single site printing @ Back lit
17	Wall Mounted Storage Shelf	Perforated wall size of W 4'-0" x H 4 '-0"
		Perforated wall size of W 4'-0" x H 4 '-0"

Note: The specifications have been added post discussion with Industry experts in order to provide level playing field to vendors and to facilitate maximum participation. However, if any vendor feels that better specifications are needed to ensure stability and longevity of the supplied goods and products, the same need to be communicated on or before pre-bid meeting. Post that no such things will be entertained.

(ii) Technical Specifications for Supply, fabrication and installation of racks, cash counter, chair, ladder, shopping basket, signage and shutter etc.:

S. No.	Elements	Type of Display Rack	Specification
1.	SKU Display Rack	Wooden	1.1 Supply and Fabrication of Self standing Display rack size W 3'-0" x H 7'-0" with taper on both sides with structure in MS tube section 25x25 mm @1.2 mm thickness and wooden shelf in 18 mm prelam board- 6 nos @ 450 mm depth -1 no., 300 mm depth – 5 no.
			1.2 Supply and Fabrication of Self standing Display rack size W 3'-0" x H 8'-0" with taper on both sides with structure in MS tube section 25x25 mm @1.2 mm thickness and wooden shelf in 18 mm prelam board- 7 nos @ 450 mm depth -2 no., 300 mm depth – 6 no.
			1.3 Supply and Fabrication of Self standing Display rack size W 3'-0" x H 7'-0" with taper on both sides with structure in MS tube section 25x25 mm @1.2 mm thickness and wooden shelf in 18 mm prelam board- 6 nos @ 450 mm depth -1 no., 300 mm depth – 5 no.
			1.4 Supply and Fabrication of Self standing Display rack size W 3'-0" x H 8'-0" with taper on both sides with structure in MS tube section 25x25 mm @1.2 mm thickness and wooden shelf in 18 mm prelam board- 7 nos @ 450 mm depth -2 no., 300 mm depth – 5 no.
		Mild Steel	1.5 Supply and Fabrication of Modular Display Racks size W 2'-0" x H 7'-0" and with structure in with shelves of 20 Gauge MS (0.9 mm thickness), Channel of 14 Gauge, Bracket 12 Gauge, Backsheet 22 Gauge @ 15 inch depth -3 no., 12 inch depth – 3 no.
			1.6 Supply and Fabrication of Modular Display Racks size W 2'-0" x H 8'-0" and with structure in with shelves of 20 Gauge MS (0.9 mm thickness), Channel of 14 Gauge, Bracket 12 Gauge, Backsheet 22 Gauge @ 15 inch depth -3 no.,12 inch depth – 4 no.
			1.7 Supply and Fabrication of Modular Display Racks size W 3'-0" x H 7'-0" and with structure in with shelves of 20 Gauge MS (0.9 mm thickness), Channel of 14 Gauge, Bracket 12 Gauge, Backsheet 22 Gauge @ 15 inch depth -3 no.,12 inch depth – 3 no.

			1.8 Supply and Fabrication of Modular Display Racks size W 3'-0" x H 8'-0" and with structure in with shelves of 20 Gauge MS (0.9 mm thickness), Channel of 14 Gauge, Bracket 12 Gauge, Backsheet 22 Gauge @ 15 inch depth -3 no.,12 inch depth – 4 no.
			1.9 Supply and Fabrication of Modular Display Racks size W 4'-0" x H 7'-0" and with structure in with shelves of 20 Gauge MS (0.9 mm thickness), Channel of 14 Gauge, Bracket 12 Gauge, Backsheet 22 Gauge @ 15 inch depth -3 no.,12 inch depth – 3 no.
			1.10 Supply and Fabrication of Modular Display Racks size W 4'-0" x H 8'-0" and with structure in with shelves of 20 Gauge MS (0.9 mm thickness), Channel of 14 Gauge, Bracket 12 Gauge, Backsheet 22 Gauge @ 15 inch depth -3 no.,12 inch depth – 4 no.
2	Display Rack-Gondola	Wooden	2.1 Supply and Fabrication of Self standing Display rack size W 4'-0" x H 5'-0" X D 2'-0" with taper on both sides (top depth- 1'6", Bottom Depth-2'0") with structure in MS tube section 25x25 mm @1.2 mm thickness and wooden shelf in 18 mm prelam board- 6 nos @ top shelf depth - 450 mm & bottom shelf depth - 550 mm (Self standing Display rack to be grouted in floor)
		Mild Steel	2.2 Supply and Fabrication of Modular Display Racks size W 3'-0" x H 5'-0" X D 1'-5" with taper on both sides of 0.9 mm and with structure in with shelves of 20 Gauge MS, Channel of 14 Gauge, Bracket 12 Gauge, Backsheet 22 Gauge, 15 inch depth for each shelves
3	Counter Desk		Desk specification with W 1'-8 X H 3'-0" X L 3'-4" structure in MS, 2-3 number of drawers with 1-inch prelam wooden top
4	Chair		Standard MS chair with Cushion
5	Ladder		Aluminium Ladder 4feet
6	Shopping Basket		Multiuse shopping plastic basket for super mart of standard size
7	Rolling Shutter		MS rolling shutter in 0.8mm sheet with all hardware, fitting & lock
8	Shelves Rack	Shelves Rack	Shelve Rack with size of 12 inch

			Shelve Rack with size of 15 inch
			Shelve Rack with size of 18 inch
9	Signage Board	Signage-Opt. 1	ACP signage size – 3mm laser cut Lit acrylic letters, 1.5 inch width as per approved design, 3mm ACP sheet, 9 mm solid white acrylic tray, with MS frame structure. Lighting with Led modules asper required quantity
		Signage-Opt. 2	ACP signage size – 3mm laser cut Non-Lit acrylic letters as per approved design, 3mm ACP sheet, with MS frame structure. Lighting with Led modules asper required quantity
		Signage-Opt. 3	Lit Flex signage size - Flex Printing and installation on MS Frame structure. Specs: 1 "or 3/4" square pipe frame double structure, Precoated 22 swg GI sheet on sides and 26 swg GI sheet at back Single site printing @Alluminium L Channel Edge lit
		Signage-Opt. 4	Lit Flex signage size - Flex Printing and installation on MS Frame structure. Specs: 1 "or 3/4" square pipe frame double structure, Precoated 22 swgGI sheet on sides and 26 swg GI sheet at back Single site printing @Back lit
		Signage-Opt. 5	Non-Lit Flex signage size - Flex Printing and installation on MS frame structure. Spec: 1 "or 3/4" square pipe
10	Wall Mounted Storage Shelf	Counter Background Shelf	Perforated wall size of W 4'-0" x H 4 '-0"
			Perforated wall size of W 4'-0" x H 4 '-0"

Note: *The specifications have been added post discussion with Industry experts in order to provide level playing field to vendors and to facilitate maximum participation. However, if any vendor feels that better specifications are needed to ensure stability and longevity of the supplied goods and products, the same need to be communicated on or before pre-bid meeting. Post that no such things will be entertained.

****HAICL** can seek quotation from empanelled vendors in near future for items which are not listed above or required basis customisation. The element of the items will be enlisted post negotiation with the vendors.

8. Financial Bid

(i) Financial bid-1 for supply, fabrication and installation of Pre-fabricated Retail outlets (porta cabins).

Size/dimension of outlet:

Store Size: - W-12'0" X D-16'6" X H-10'0"

Platform: - W-12'0" X D-2' X H - 6"

S. No	Elements	Description / Specification	Qty	Amount inclusive of taxes (Quote required)
1	Wall	Supply Fabrication and installation of External walls Structure: MS frame structure with 80X80 tube sections for columns and supporting legs min 6 no's and internal walls with 40x40mm finished with 0.8 mm MS profile sheet (Make: Tata Bluescope / JSW Steel Ltd. / Bhushan Power and Steel Ltd. or equivalent) with paint finish from outside	Per sq. ft.	
2	Door	Supply Fabrication and installation of Full width front open Foldable Door with required hardware and lock made with 0.8 mm MS Profile Sheet (Make: Tata Bluescope / JSW Steel Ltd. / Bhushan Power and Steel Ltd. or equivalent) on MS frame structure	Per sq. ft.	
3	Roof	Supply Fabrication and installation of ceiling: MS frame structure in 80x40mm and 40x40 mm tube section covered with 0.8mm MS profile sheet (Make: Tata Bluescope / JSW Steel Ltd. / Bhushan Power and Steel Ltd. or equivalent) with approved paint from the inner side. Installation of glass wool based insulation on the roof with 6mm prelam board as false ceiling	Per sq. ft.	
4	Flooring	Supply Fabrication and installation of flooring: 18 mm Bison board flooring on MS frame bed with 60x40 mm tubular section finished with 1.5mm PVC flooring with approved colour/pattern	Per sq. ft.	
		Supply Fabrication and installation of external plinth: 18 mm Bison board flooring on MS frame bed with 60x40 mm tubular section finished with 1mm MS chequered sheet / vitrified tile (make Kajaria, NITCO, Somany)	Per sq. ft.	
5	Electricals	Supply Fabrication and installation of required electrical work: All internal wiring with PVC conduit with 2 switch & socket @16 amp and 3 switch & socket @ 6 Amp with MCB as required Lighting - Hanging LED dome light, 20 watts (make Bajaj, Philips, Surya or equivalent) - 6 no's Connector: - Using MCB & connector for main cable	L/S	

		(make Polycab, Havells, Finolex or equivalent) as required		
6	Façade	Supply Fabrication and installation of ACP external Signage with LED Tube Lights and laser cut Acrylic Letters.	Size-7'-6" x 3'6"	
		Supply Fabrication and installation of external Canopy in MS structure and Profile sheet with 3 no. LED downlighter-8 watt	Per sq. ft.	
7	Civil	Supply, Fabrication and installation of PCC Block with 8mm base plate to support the super structure - 6 nos. as required per site condition	Pit size - W1'-0" x D1'-0" x H 1'6"	

(ii) Financial bid-2 for the supply, fabrication and installation of racks, cash, counter, chair, ladder, shopping basket, signage and shutter.

S. No	Elements	Description / Specification	Qty	Amount inclusive of taxes (Quote required)
1	SKUs Display Rack	1.1 Supply and Fabrication of Self standing Display rack size W 3'-0" x H 7'-0" with taper on both sides with structure in MS tube section 25x25 mm @1.2 mm thickness and wooden shelf in 18 mm prelam board- 6 nos @ 450 mm depth -1 no., 300 mm depth – 5 no.	1	
		1.2 Supply and Fabrication of Self standing Display rack size W 3'-0" x H 8'-0" with taper on both sides with structure in MS tube section 25x25 mm @1.2 mm thickness and wooden shelf in 18 mm prelam board- 7 nos @ 450 mm depth -2 no., 300 mm depth – 6 no.	1	
		1.3 Supply and Fabrication of Self standing Display rack size W 3'-0" x H 7'-0" with taper on both sides with structure in MS tube section 25x25 mm @1.2 mm thickness and wooden shelf in 18 mm prelam board- 6 nos @ 450 mm depth -1 no., 300 mm depth – 5 no.	1	
		1.4 Supply and Fabrication of Self standing Display rack size W 3'-0" x H 8'-0" with taper on both sides with structure in MS tube section 25x25 mm @1.2 mm thickness and wooden shelf in 18 mm prelam board- 7 nos @ 450 mm depth -2 no., 300 mm depth – 5 no.	1	
		1.5 Supply and Fabrication of Modular Display Racks size W 2'-0" x H 7'-0" and with structure in with shelves of 20 Gauge MS (0.9 mm thickness), Channel of 14 Gauge, Bracket 12 Gauge, Backsheet 22 Gauge @ 15 inch depth -3 no., 12 inch depth – 3 no.	1	
		1.6 Supply and Fabrication of Modular Display Racks size W 2'-0" x H 8'-0" and with structure in with shelves of 20 Gauge MS (0.9 mm thickness), Channel of 14 Gauge, Bracket 12 Gauge, Backsheet 22 Gauge @ 15 inch depth -3 no.,12 inch depth – 4 no.	1	
		1.7 Supply and Fabrication of Modular Display Racks size W 3'-0" x H 7'-0" and with structure in with shelves of 20 Gauge MS (0.9 mm thickness), Channel of 14 Gauge, Bracket 12 Gauge, Backsheet 22 Gauge @ 15 inch depth -3 no.,12 inch depth – 3 no.	1	
		1.8 Supply and Fabrication of Modular Display Racks size W 3'-0" x H 8'-0" and with structure in with shelves of 20 Gauge MS (0.9 mm thickness), Channel of 14 Gauge, Bracket 12 Gauge, Backsheet 22 Gauge @ 15 inch depth -3 no.,12 inch depth – 4 no.	1	
		1.9 Supply and Fabrication of Modular Display Racks size W 4'-0" x H 7'-0" and with structure in with shelves of 20 Gauge MS (0.9 mm thickness), Channel of 14 Gauge, Bracket 12 Gauge, Backsheet 22 Gauge @ 15 inch depth -3 no.,12 inch depth – 3 no.	1	

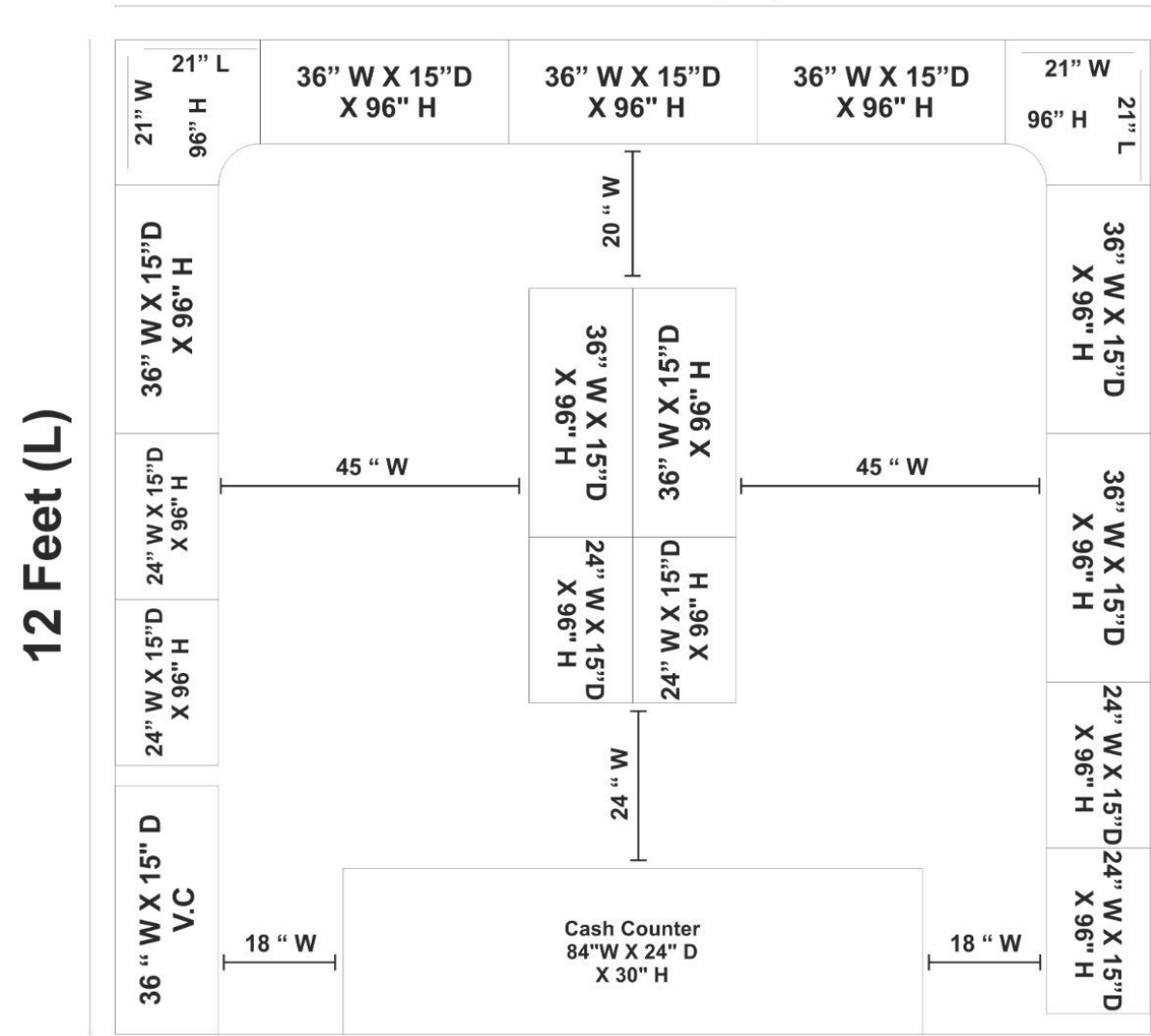
		1.10 Supply and Fabrication of Modular Display Racks size W 4'-0" x H 8'-0" and with structure in with shelves of 20 Gauge MS (0.9 mm thickness), Channel of 14 Gauge, Bracket 12 Gauge, Backsheet 22 Gauge @ 15 inch depth -3 no.,12 inch depth – 4 no.	1	
2	Display Rack-Gondola	2.1 Supply and Fabrication of Self standing Display rack size W 4'-0" x H 5'-0" X D 2'-0" with taper on both sides (top depth- 1'6", Bottom Depth-2'0") with structure in MS tube section 25x25 mm @1.2 mm thickness and wooden shelf in 18 mm prelam board- 6 nos @ top shelf depth - 450 mm & bottom shelf depth - 550 mm (Self standing Display rack to be grouted in floor)	1	
		2.2 Supply and Fabrication of Modular Display Racks size W 3'-0" x H 5'-0" X D 1'-5 " with taper on both sides of 0.9 mm and with structure in with shelves of 20 Gauge MS, Channel of 14 Gauge, Bracket 12 Gauge, Backsheet 22 Gauge, 15 inch depth for each shelves	1	
3	Counter Desk	Desk specification with W 1'-8 X H 3'-0" X L 3'-4" structure in MS, 2-3 number of drawers with 1-inch prelam wooden top	1	
4	Chair	Standard MS chair with Cushion	1	
5	Ladder	Aluminum Ladder 4 feet	1	
6	Shopping Basket	Multiuse shopping plastic basket for super mart of standard size	1	
7	Rolling Shutter	MS rolling shutter in 0.8mm sheet with all hardware, fitting & lock	Sq. ft.	
8	Shelf Rack	Shelve Rack with size of 12 inch	1	
		Shelve Rack with size of 15 inch	1	
		Shelve Rack with size of 18 inch	1	
9	Signage-Opt. 1	ACP signage size – 3mm laser cut Lit acrylic letters, 1.5 inch width as per approved design, 3mm ACP sheet, 9 mm solid white acrylic tray, with MS frame structure. Lighting with Led modules asper required quantity	Sq. Ft.	
	Signage-Opt. 2	ACP signage size – 3mm laser cut Non-Lit acrylic letters as per approved design, 3mm ACP sheet, with MS frame structure. Lighting with Led modules asper required quantity	Sq. Ft.	
	Signage-Opt. 3	Lit Flex signage size - Flex Printing and installation on MS Frame structure. Specs: 1 "or 3/4" square pipe frame double structure, Precoated 22 swg GI sheet on sides and 26 swg GI sheet at back Single site printing @Alluminium L Channel Edge lit	Sq. Ft.	
	Signage-Opt. 4	Lit Flex signage size - Flex Printing and installation on MS Frame structure. Specs: 1 "or 3/4" square pipe frame double structure, Precoated 22 swg GI	Sq. Ft.	

		sheet on sides and 26 swg GI sheet at back Single site printing @Back lit		
10	Wall Mounted Storage Shelf	Perforated wall size of W 4'-0" x H 4'-0"	1	
		Perforated wall size of W 4'-0" x H 4'-0"	1	

Proposed Store Layout- 150 Sq. Ft.

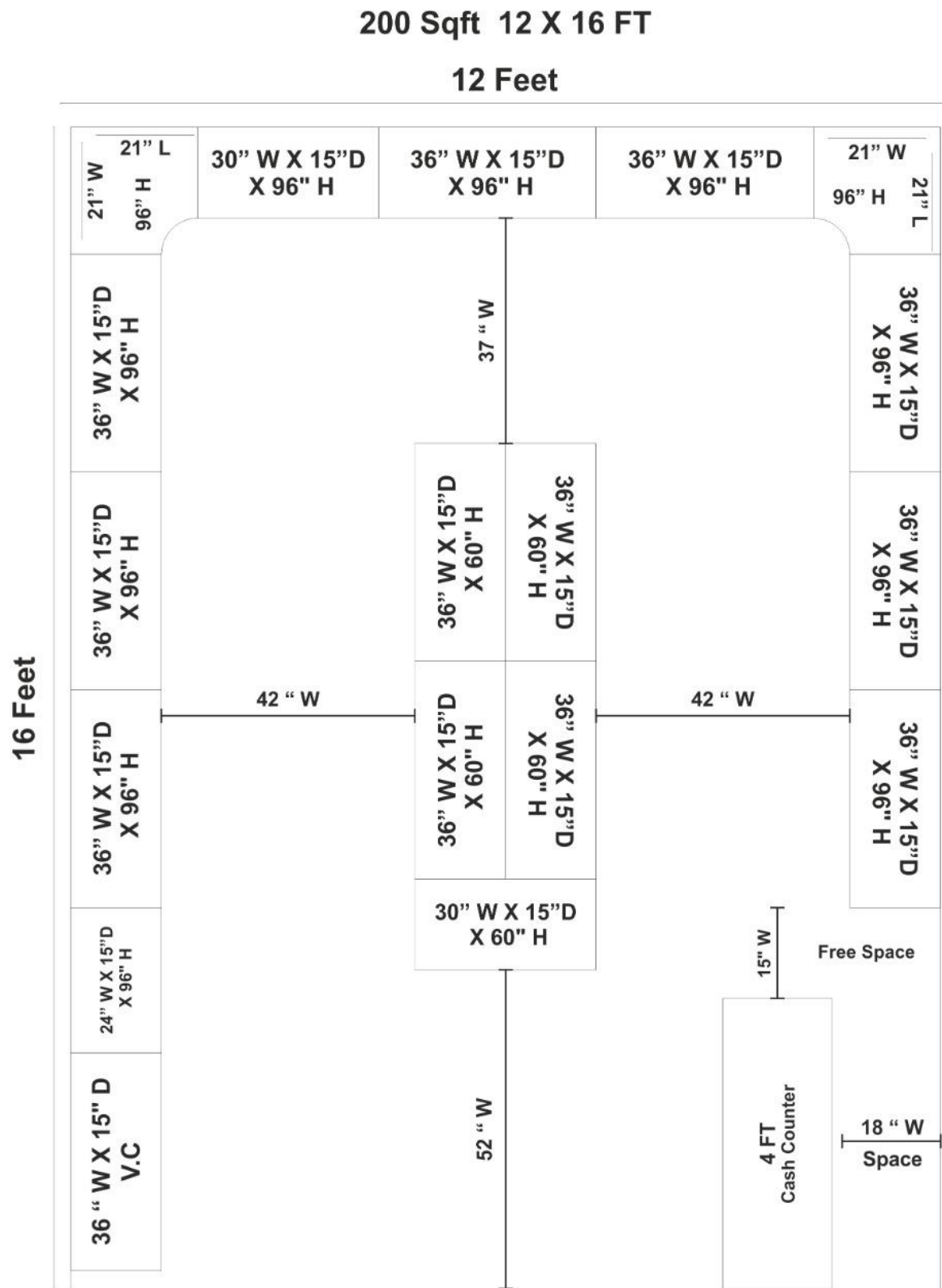
150 Sqft 12.5(W) X 12 (L) FT

12.5 Feet (W)



**Illustrative store layout*

Proposed Store Layout- 200 Sq. Ft

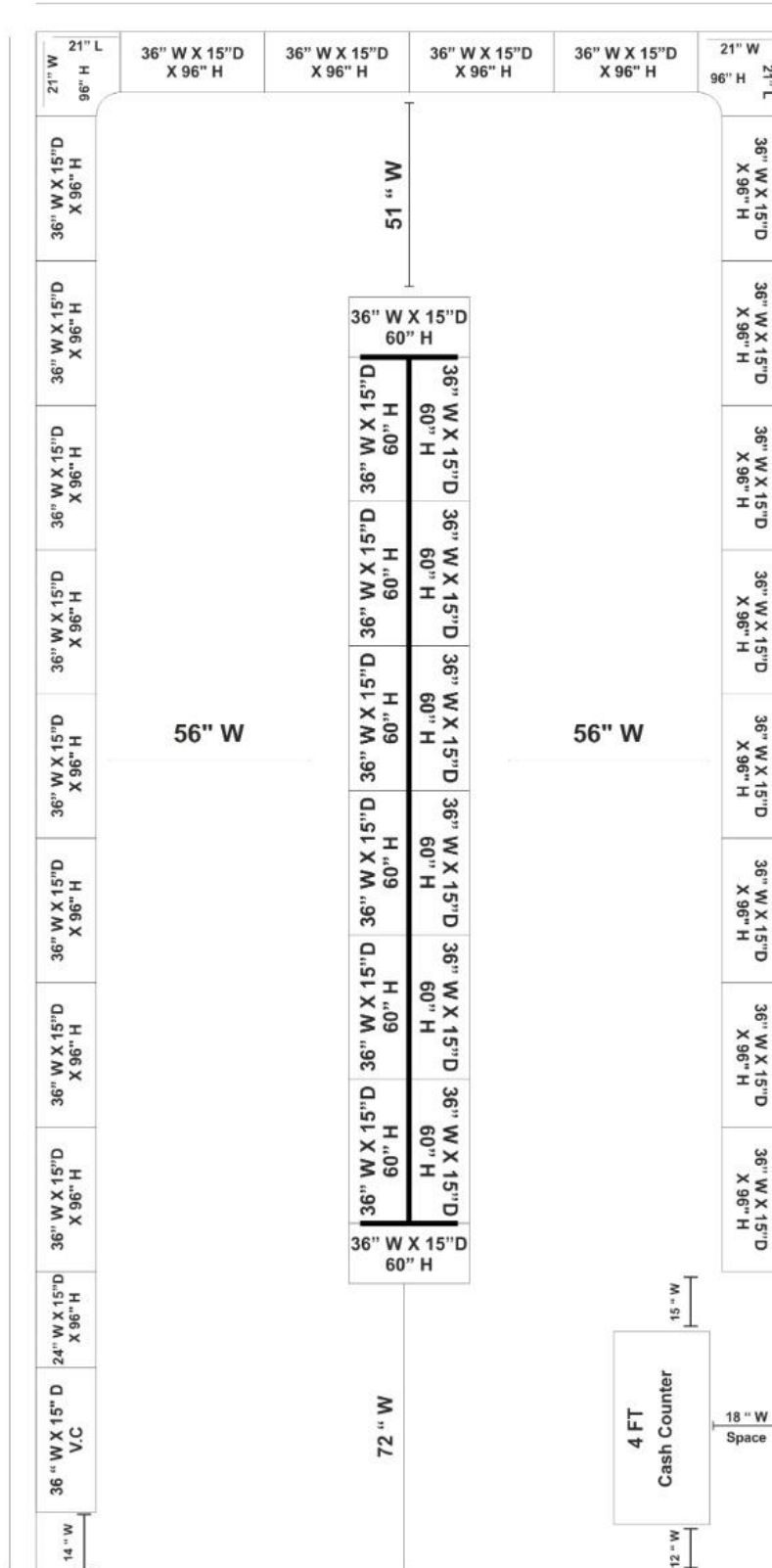


**Illustrative store layout*

**Illustrative store layout*

500 Sqft 15.5 W X 32 L FT

15.5 Feet

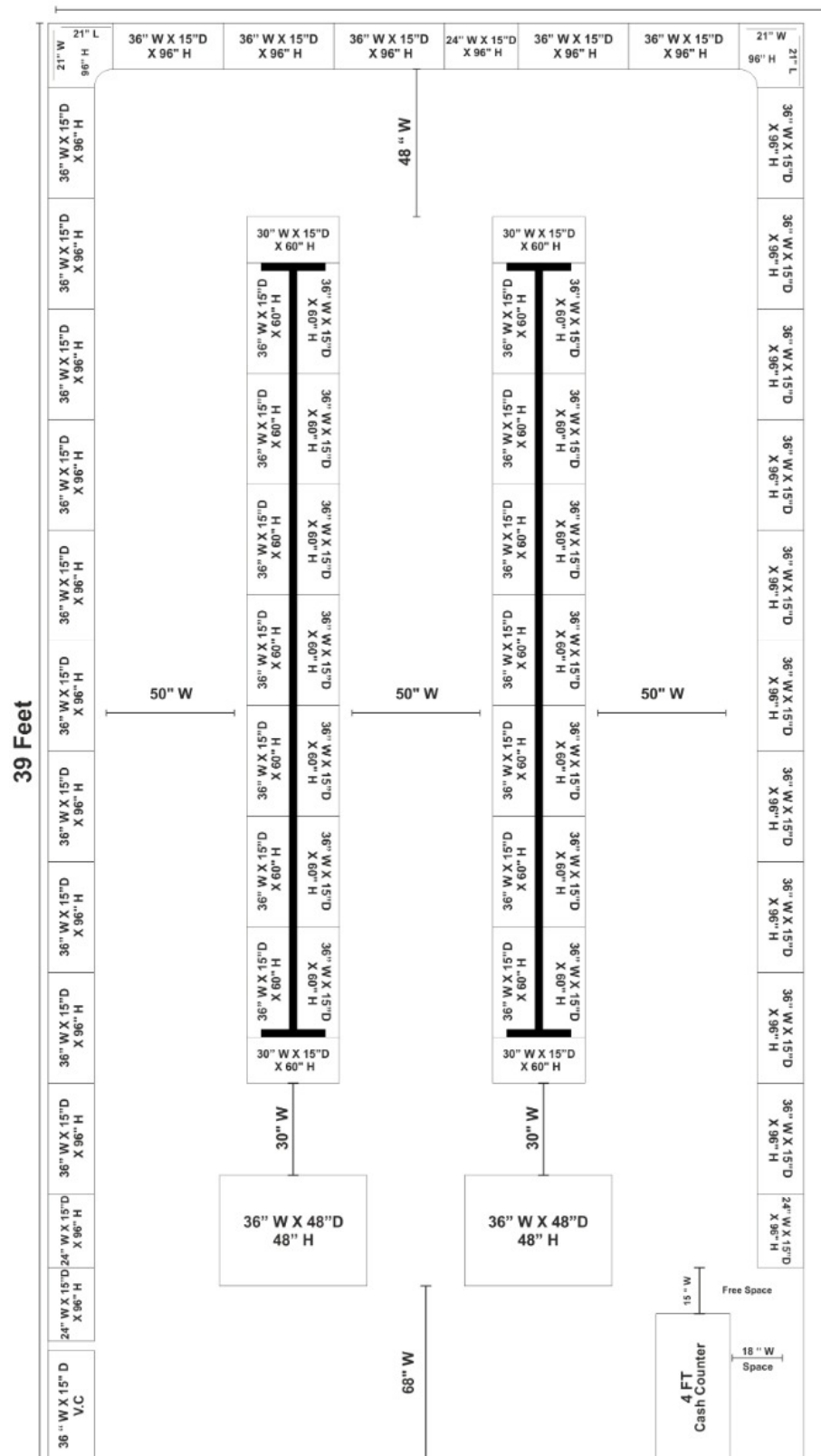


**Illustrative store layout*

Proposed Store Layout- 800 Sq. Ft.

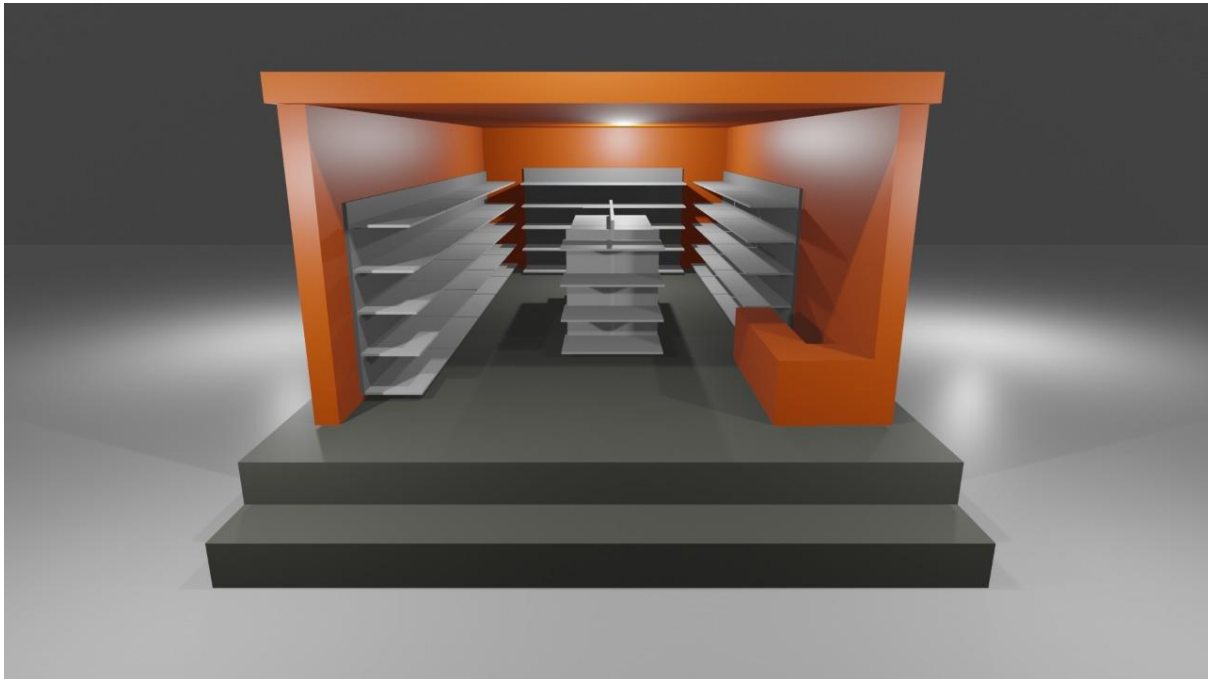
800 Sqft 20.5 (W) X 39 (L)FT

20.5 Feet



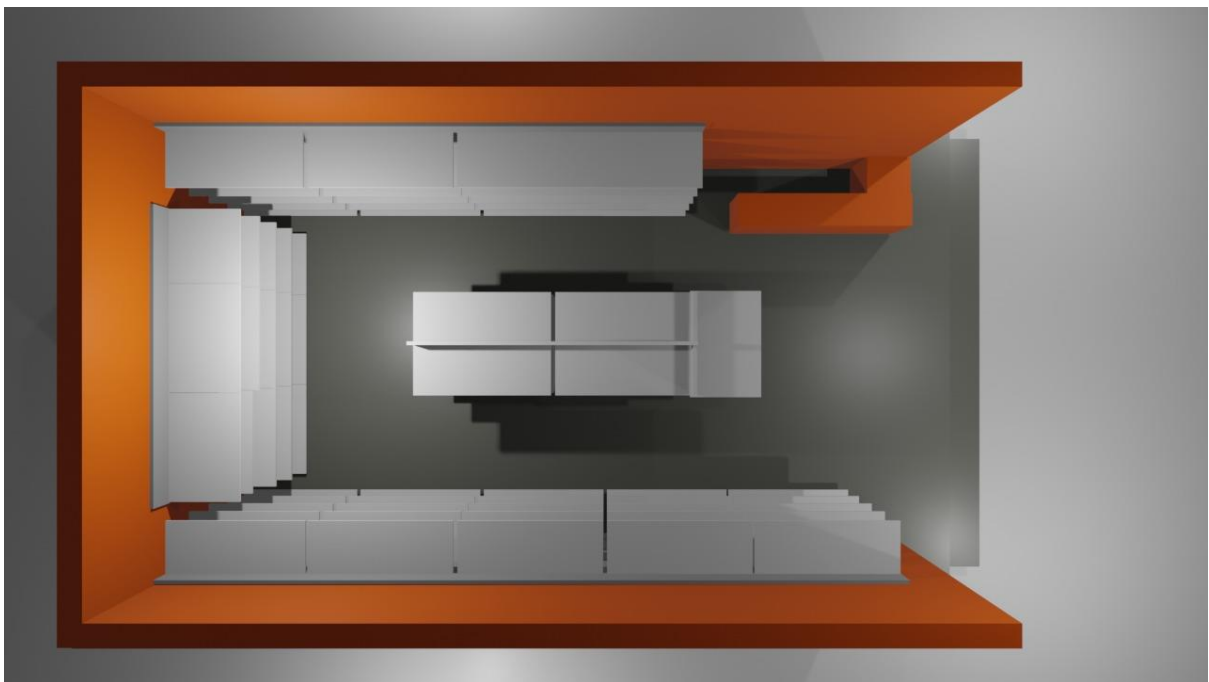
***Illustrative store layout**

Front View



**Illustrative image of retail store*

Aerial View



**Illustrative image of retail store*

Pre-fabricate Shop Layout- 200 Sq. ft.



**Illustrative image of portable cabin*



**Illustrative image of portable cabin*

9. Checklist

S. No.	Requirement	Required Documents	Yes/ No
1	The bidder (a Business Entity) shall mean a company registered in India under the Companies Act, 1956 or 2013 or a partnership firm registered under the Limited Liability Partnership Act of 2008 and operating for at least last 3 (Three) years as on March 31, 2021.	Incorporation/ Registration Certificate	
2	<p>Category 1 only i.e. minimum 200 outlet's interior</p> <p>The entity should have at-least average of Rs. 0.5 Cr. Annual Turnover for providing similar nature of work in last three Financial Years</p> <p>Category 2 only i.e. Pre-fabricated shops as per the demand from Franchisee</p> <p>The entity should have at-least average of Rs. 1 Cr. Annual Turnover for providing similar nature of work in last three Financial Years</p> <p>Category 1 and 2 both</p> <p>The entity should have at-least average of Rs. 1.5 Cr. Annual Turnover for providing similar nature of work in last three Financial Years</p>	Certificate from the statutory auditor/ Client's certificate and agreement/ work order	
3	<p>One similar nature of completed Work costing not less than Rs. 1 Cr. in last 3 years</p> <p>OR</p> <p>Two similar nature of completed Work costing not less than Rs. 0.5 Cr. each in last 3 years</p> <p>OR</p> <p>Three similar nature of completed work costing not less than Rs. 0.35 Cr. each in last 3 years</p>	Client's certificate and agreement/work order	

4	The bidder should have successfully completed one project with State or Central Government or reputed organisation to deliver similar project of store fitment	Client's certificate and agreement/work order	
6	The bidder should not currently have been blacklisted/banned/debarred by any State/ Central Government or any of its Agency/ PSU or under a declaration of ineligibility for fraudulent or corrupt practices or inefficient/ ineffective performance.	Undertaking by the bidder Falsification and nondisclosure will lead to disqualification from the evaluation process	
7	Other Details of the bidders	GST, PAN Card, Firm's Factory Address with documentary proof	
8	Service Fee, Processing Fee & EMD Details	Has the DD for EMD and other fees deposited	
9	Undertaking that vendor is agree of terms & conditions mentioned under this contract	Letter copy in company letter head	